




Linoleum
xfTM2

LINOVILLE
Get Close
to Lino





Linoville is a visual expression of the qualities of linoleum that pull you into the world of linoleum and bring you closer to the product. With our large collection of designs, our xf² surface treatment and acoustic options, come and discover linoleum like you have never seen before.

Linoville... Get close to Lino!



LINOVILLE. Closer to Nature p.4

LINOVILLE. Closer to Colour p.5

Veneto p.6

Grands Classiques p.8

Style p.9

Etrusco p.10

LINOVILLE. Closer to Efficiency

xfTM surface treatment p.11

Cleaning
and maintenance p.13

TECHNICAL DATA p.14

RANGE OVERVIEW p.15-16

SURFACE FINISHING & ACCESSORIES p.17



LINOVILLE. Closer to Nature!

THE NATURAL CHOICE FOR PEOPLE AND THE ENVIRONMENT

Natural, versatile and sustainable. Combining over 100 years of tradition, craftsmanship and innovation, our linoleum offers a fresh approach to the flooring needs of today and lifestyles of tomorrow.

A TRADITIONAL FLOORING MADE IN ITALY

Our linoleum is made in Narni, Italy, with the same original recipe since 1898 and sold across the world. Tarkett's teams have an intimate understanding of the ingredients in order to adapt manufacturing to the variations of each year's crop.

- Every linoleum is seasoned for about 25 days, individually sampled by our experts to ensure that its natural characteristics are at their best.
- Our linoleum was the world's first to be certified Silver Cradle to Cradle® for its sustainable approach.

FOR A SUSTAINABLE FUTURE

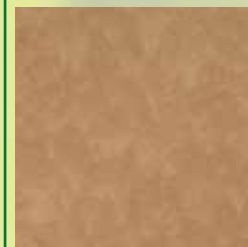
Sustainability at Tarkett means developing quality of life solutions that benefit people and the planet over the long-term. We are committed to a circular economy where resources are continually reused and recycled - creating products today that become the raw materials of tomorrow. To get there we have adopted a closed loop circular design model, powered by **Cradle to Cradle**® principles. It helps us design products that contribute positively to the environment and people's well-being at every step of the product's life.

At Tarkett, our linoleum is an outstanding example of sustainable circular design:

- Environmentally-friendly ingredients, naturally bactericidal, with no added flame retardant.

- Single homogeneous construction giving greater resistance to wear and durability over time.
- Increased flexibility in handling and installing thanks to its cork ingredients.
- Naturally phthalate-free for a good indoor quality and low emission levels.

It demonstrates Tarkett's sustainable approach throughout - from how it's made in Narni to how people experience it across the world.



1805 400

100% linen

Our colour 100% linen is the **ONLY** linoleum awarded

C2C GOLD



AN EVERYDAY PRACTICE

At our Italian factory in Narni, thanks to a tri-generation system, we are able to produce, autonomously, 20% of electricity needs and 3% of heating and cooling power from a single device (a gas engine) with a significant reduction of energy purchase from external supplier and with a reduction of CO₂ eq. emissions, thus reinforcing our green performances to reach 2020 targets. The plant in Narni has been certified ISO 14067:2013 (Carbon Foot print) since 2014, and:

- vs 2010, we have reduced waste sent to landfill by **80%** - our objective is 0% waste by 2020
- **100%** of water needed for production is recycled, saving 80 million liters of water a year
- **17%** of the energy used is renewable, of which **9%** is internal production (biomass boiler, geothermal system and photovoltaic panels) and **8%** is external.





LINOVILLE. Closer to Colour!

Drawing on Tarkett's on-going trends analysis and colour expertise, we have created a rich collection of linoleum designs to meet the ambitions of any architectural project.

OPEN TO A WORLD OF COLOUR

Our ranges have been developed through consultation with architects across the world at every design phase. It has enabled Tarkett to perfect the right combination of colour, balance and structure for each design concept.

EXPLORING THE NEEDS OF TOMORROW

To anticipate how needs will change, our design teams explore emerging architectural, cultural and lifestyle trends. We share these insights in our Tarkett Observer studies that identify key orientations to enhance interior building design and user experience in healthcare, education and retail environments of the future.

TARKETT OBSERVER EDUCATION

In our latest trend analysis, we set out the fundamental contribution of colour and design in education. The colour universe of linoleum, in compact and acoustic solutions, can help create better learning environments from kindergarten, primary schools to university facilities.

OUR DESIGN ORIENTATIONS:

HUMAN INSIDE

- Creating social cohesion for a stimulating environment that improves focus and concentration.
- An environment that plays with graphic and colour codes to give meaning to each area.

INTERACTIVE SPACE

- Flexible and modular design to change perceptions of learning and stimulate creativity
- Tonic and bright colour range with materials and motifs that bring the present into the future.

GREEN VALUE

- Creating a first contact with eco-responsibility and integrating environmental awareness.
- Greens, browns and neutrals and materials that evoke Nature. Re-usability and recyclability.

TARKETT FLOORCRAFT

We offer a dedicated Floorcraft Service to create unique flooring concepts through highlighting visual inlays, colourways, zoning and directional design.



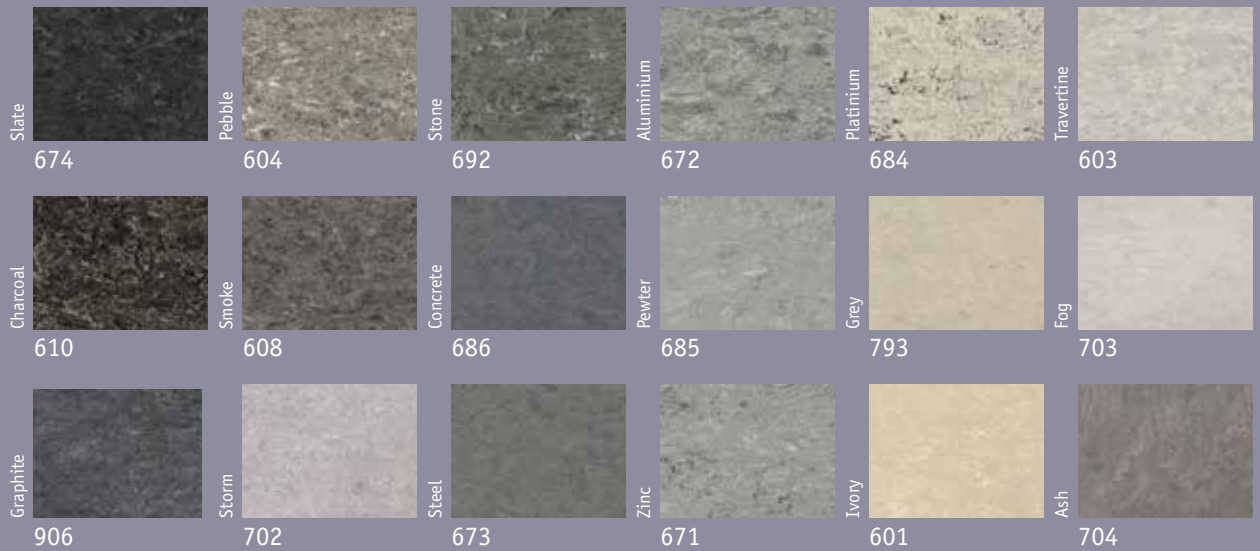
LINOVILLE. Closer to Colour!

VENETO a collection of strong and subtle marbled designs in soft or intense pattern variations for a timeless effect.

Our Veneto range includes:

- « 20 Grands Classiques* »: a selection of 20 timeless colours among the 72 Veneto, that are guaranteed to be in production until 2033. All colours are available in 7 different specifications and with Tarkett's multicolour welding rods xF² (more details on p.8).
- All shades of the colour spectrum in a combination of neutral and contemporary accents.

VENETO - GREY



VENETO - BEIGE



*Eternal Classics



LINOVILLE. Closer to Comfort!

Customize your acoustic for comfort and well-being

LINOLEUM SILENCIO xf² - 18 dB

To reduce impact and ambient noise and enhance underfoot comfort and well-being, Tarkett's Silencio xf² offers an acoustic linoleum solution with sound reduction of 18 dB.

With a total thickness of 3.8mm, it's made in a two-layer construction of 2.5mm linoleum with a pre-bonded recycled foam underlay. Available in all design options.

LINOLEUM ACOUSTIC CORK xf² AND ESSENZA - 15 dB

The natural acoustic option, easy to install and to live with, is offered on demand in the following options:

a) Veneto xf² and Veneto Essenza: 2.5 mm linoleum with jute backing and Elafono cork underlayer

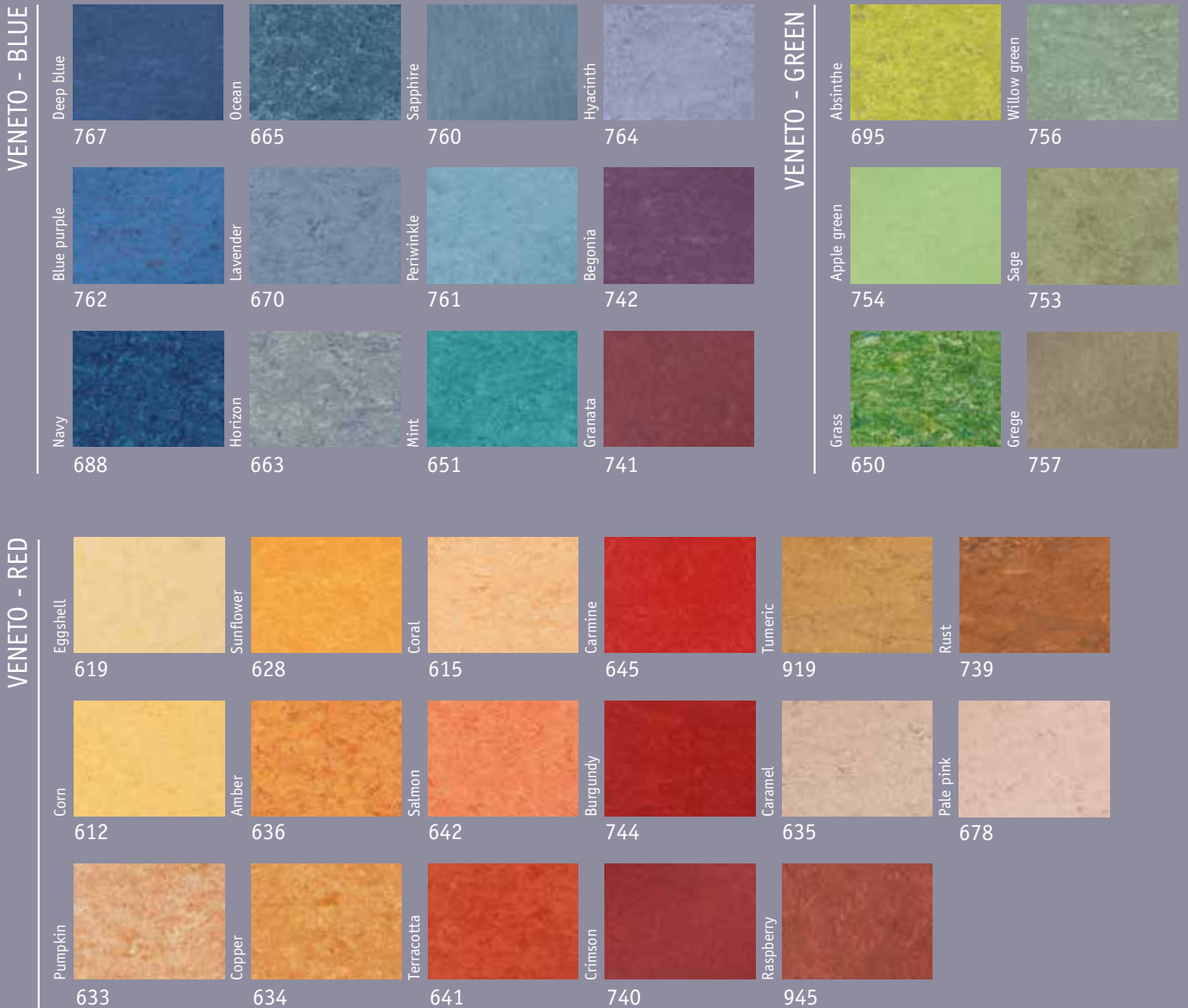
b) Veneto xf²: 2mm linoleum with jute backing and Elafono cork underlayer.

c) Style Emme xf²: 2.5 mm linoleum with jute backing and Elafono cork underlayer

These ready-to-install natural solutions provide a good acoustic insulation of 15 dB – the best in the market with similar products - as well as high resistance to indentation.

ELAFONO – up to 15 dB

To increase acoustic absorption, Tarkett also offers Elafono – a 2mm 100% natural corkment underlay with a sound insulation up to 15 dB, depending on the thickness – that can be installed in combination with any compact linoleum flooring.

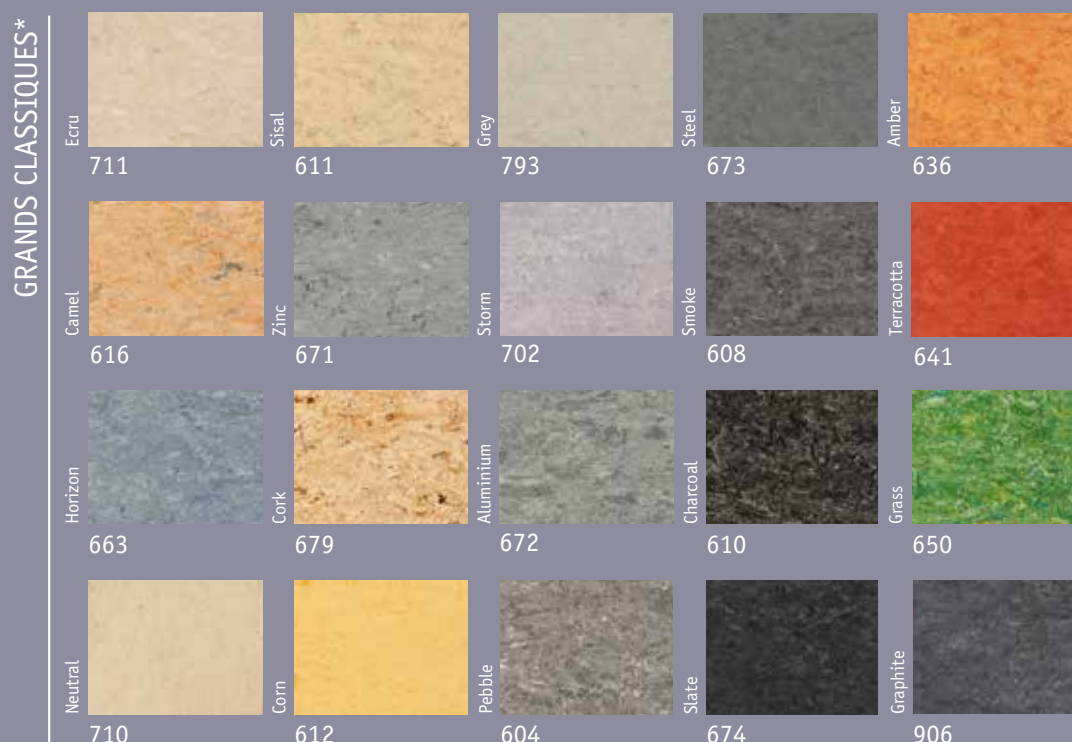


LINOVILLE. Closer to Colour!

GRANDS CLASSIQUES* a selection of 20 timeless colours that we guarantee in production until 2033.

20 colours are available in 7 different levels of traffic resistance with xf² surface treatment, and can be matched with our new range of multicolour welding rods for a perfect finish. This includes Sicuro R10 anti-slip and Essenza non-permanent surface finish. Grand Classiques designs are also available in acoustic option: Silencio 18 dB and Acoustic Cork 15 dB.

- 2.0mm xf²
- 2.5mm xf²
- 2,5mm Essenza
- 2,5mm xf² R10 slip resistant rating
- 3.2mm xf²
- Silencio xf² 18 dB
- Acoustic Cork xf² & Essenza 15 dB



MULTICOLOUR WELDING RODS

For a virtually seamless finish, Tarkett has developed a new range of multicolour welding rods, designed to match the colour spectrum of our linoleum collection for the **Grands Classiques** colours. By including contrasting particles coordinated with the flooring's accent colour and design, they enable architects to achieve a continuous flowing flooring design. Now even easier and quicker to integrate, they can reduce installation time.



Plain welding rods versus Multicolour welding rods

STYLE a design range where the natural patterned beauty of linoleum meets modern style.

It's a subtle mix between contemporary colours and light marbled surfaces. Colours encompass cool and warm greys, shades of beige and brown, classic black and white, with vivid accent colours in red, green, yellow, orange and blue.



**SILENCIO xf²,
ACOUSTIC CORK xf²
& ESSENZA.**

We offer SILENCIO xf², ACOUSTIC CORK xf² and ESSENZA acoustic options with greater sound reduction and thermal insulation available across all Tarkett linoleum colour designs.

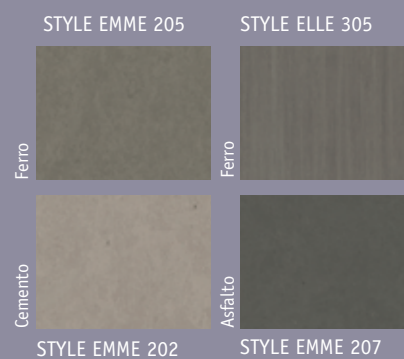
STYLE EMME a subtle marbling for refined and sophisticated styling.

STYLE ELLE a discrete directional linear design.

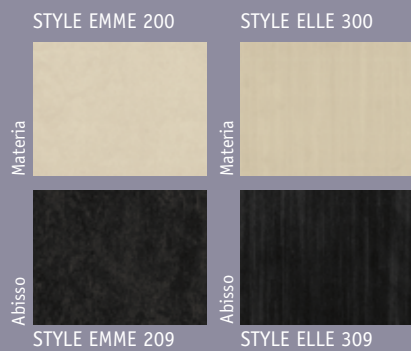
BEIGE & BROWN



COOL GREYS



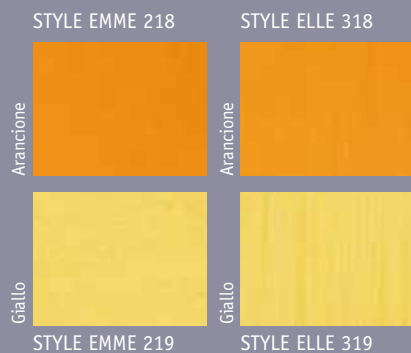
BLACK & WHITE



WARM GREYS



VIVID ACCENTS



VIVID ACCENTS



LINOVILLE. Closer to Colour!

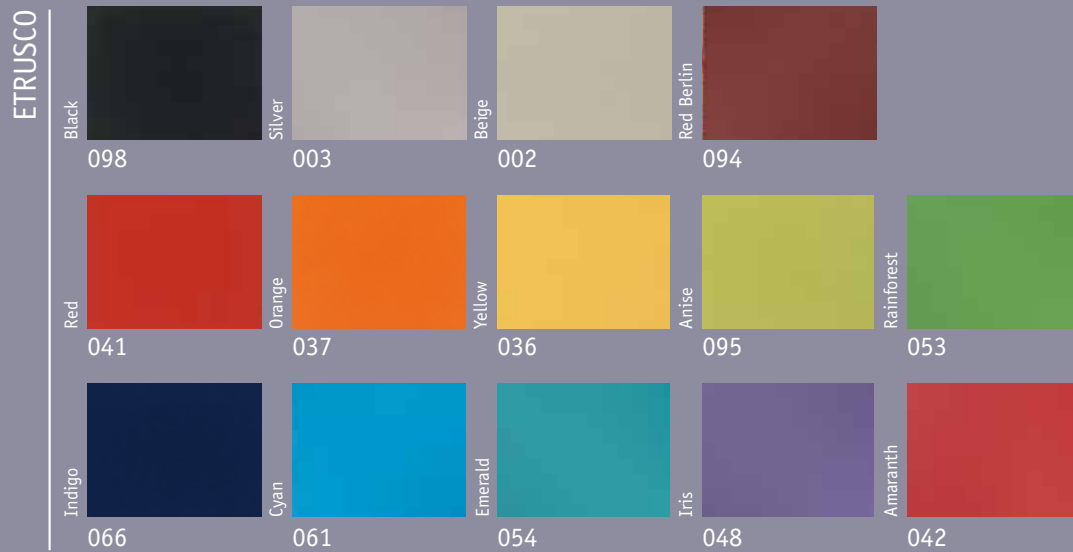
ETRUSCO a contemporary linoleum range featuring fourteen deep and radiant colours.

Thanks to its deep colours and plain design, Etrusco xf² can be combined easily with any other type of pattern or used alone, for great design effects.



SILENCIO xf².

We offer acoustic options with greater sound reduction and thermal insulation available across all Tarkett linoleum colour designs.





LINOVILLE. Closer to Efficiency!

A HARD-WEARING SOLUTION OVER ITS LIFETIME

For 150 years, linoleum flooring has been appreciated for its natural beauty, comfort, durability and versatility in most interior environments. Tarkett was an early innovator in surface treatments – adding xf^2 technology to its linoleum to improve resistance and simplify maintenance for significant cost savings in daily cleaning and care.

xf^2 for improved performance

Now, Tarkett is introducing xf^2 - its second generation surface treatment - increasing resistance for even longer durability and reducing maintenance for a highly cost-effective flooring.

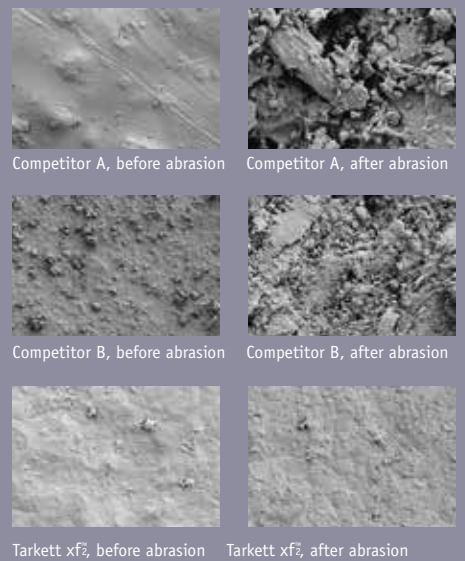
- Micro-reinforced polyurethane UV treatment that seals and hardens the surface to make it more resistant to dirt and daily wear and tear.
- A smooth matt appearance that prevents accumulation of dirt or stains.
- No need for polish, stripping and polymer waxing over the lifetime of the surface*.

Superior resistance to abrasion

No other linoleum is as resistant to abrasion. We have conducted extensive internal and external laboratory testing to evaluate the resistance of xf^2 linoleum to abrasion over time. With the help of an electron microscope and 3D surface profilometer we are now able to see, magnified, the proof of the unbeatable resistance of xf^2 . Tests were done on Competitors A, B and Tarkett samples, before and after dry abrasion by a rotation tumbler machine equipped with black pads. All linoleum are PU UV coated, following producers declarations. After 30 minutes, the test machine began to degrade the finish of Competitors' Samples A and B. Tarkett's test continued for one hour without visible finish degradation.

Resistance of xf^2 welding rods

The new formula developed by Tarkett enables us to produce welding rods – both multicolour and traditional unicolour - that offer exceptional resistance to all kinds of soiling and abrasion.



Competitor A, before abrasion

Competitor A, after abrasion

Competitor B, before abrasion

Competitor B, after abrasion

Tarkett xf^2 , before abrasion

Tarkett xf^2 , after abrasion

Source: university of Terri

After abrasion competitor A and B are destroyed when Tarkett xf^2 is still intact.

* Providing soil barriers are correctly put in place, regular maintenance is operated (daily vacuuming and mopping), furniture have appropriate leg coverings and daily surveillance.

LINOVILLE. Closer to Efficiency!

In addition to optimal durability and wear and tear resistance, Tarkett's new xf² surface treatment ensures an outstanding performance against soiling, staining to improve hygiene and simplify cleaning and maintenance. And we set out to prove it.

INHIBITING BACTERIAL GROWTH

Flooring contributes to ensuring hygienic environments in public buildings – from schools to hospitals where stain resistance to medical chemicals is mandatory for flooring materials.

Linoleum xf², with its sealed smooth surface, inbuilt resistance and naturally bactericidal qualities, can offer an effective solution.

REDUCED LIFE CYCLE COST FOR LINOLEUM xf²

The cost of the initial investment and installation normally represents just a small part of flooring's total life cycle cost. The rest is cleaning and maintenance. As the Linoleum xf² doesn't require first surface treatment after installation, neither regular wax or polish maintenance during its lifetime, consumption of water and detergent decrease significantly and give Linoleum xf² a very favorable life cycle cost.

Compared with Linoleum flooring treated with a non-permanent acrylic finish, payback on the extra investment could come within 2 months*.

For more information, please contact your Tarkett representative.

**Case study: Classrooms of 1,300m², comparison between untreated Linoleum and Linoleum Xf². For 20 years life time, respecting cleaning and maintenance recommendations: entrance matting, regular cleaning, etc.*

Savings:

- 3.7% of water saved
- 25% less detergent
- 8.9% less electricity power
- 3.8% less manpower

SIMPLIFYING CLEANING AND MAINTENANCE

The reinforced surface of linoleum xf² means no polish, stripping and polymer waxing over the lifetime of the product**. As a result, it requires less frequent, less intense cleaning and maintenance and reduces use of water, energy and chemical detergents for a better environment footprint.



** Providing soil barriers are correctly put in place, regular maintenance is operated (daily vacuuming and mopping), furniture have appropriate leg coverings and daily surveillance.

CLEANING AND MAINTENANCE: NO POLISH, NO STRIPPING, NO WAX NEEDED*

Modern day-room cleaning aims to reduce wet cleaning procedures and replace them with drier cleaning techniques. For example, the use of centrally laundered pre-impregnated mops and the wide application of appropriate machines. This makes work more effective and easier for the cleaning staff, and minimizes environmental impact. Less cleaning chemicals and less fresh water are used.

1 Initial site cleaning



After installation initial site clean is required: vacuum, sweep or damp mop the area to remove building dust and loose dirt. A combined scrubber/dryer with brushes or red pads cleans large areas very effectively. Use detergent with a low pH (3-5).

xf² will be not removed by any cleaning operation.



2 Daily and regular cleaning



Remove dust and dirt with yarn or microfiber mops or disposable mops, dry or impregnated or vacuum the floor.



Use a mop dampened with water or detergent solution to remove spots. It is essential that water does not stay on the floor or leave a film. The floor should be virtually dry after 15-20 seconds. If required spray clean the floor with a rotary machine and red pad.

3 Periodic cleaning



Combined machine

Use diluted neutral detergent. Speed low 150-250 rpm or higher. Red/brown pads are usually most suitable.

or



+



+



Machine scrubbing + Wet vacuuming + Dry buffing

- Apply a cleaning solution (fairly strong, pH 10-11, after dilution) and allow to act for 5-10 min.
- Clean the floor using a heavy-duty single disc scrubbing machine (red pad).
- Vacuum up the dirty water immediately.
- Rinse with clean water and allow the floor to dry.
- If necessary dry buff (red pad) to restore gloss. Suitable speed: 500-1000 rpm.

Sharp edged /not maintained furniture feet, sand, pebbles, permanent push and drive movements on the same area will damage every kind of flooring over the time.

TRAINING

We provide a range of on-demand training for distributors, installers and maintenance teams on Tarkett products, installation and maintenance techniques as well as individual installation of key products for demonstration and discussion with customers.

We can deliver these worldwide in our own training facilities, such as the Tarkett Studio facility near Paris, or at customer sites. Our international technical advisers can also provide personalised training or support at the start of installation on building projects.

For more information about installation training or on-site assistance in your area, contact your Tarkett representative.

* Providing soil barriers are correctly put in place, regular maintenance is operated (daily vacuuming and mopping), furniture have appropriate leg coverings and daily surveillance.

Linoleum xf²

Specification

Linoleum homogeneous floorcovering made by one single layer calandered on jute backing. Composition: linseed oil, wood and cork flour, natural resins, pigments. Product standard: EN ISO 24011.

GARANTEE
10 YEARS

CERTIFICATION & CLASSIFICATION	STANDARDS	Veneto xf ² 2 mm	Veneto xf ² - Veneto xf ² B ₂ - Style Emme xf ² - Style Elle xf ² Veneto Essenza 2.5 mm	Veneto xf ² 3.2 mm	Veneto Sicuro xf ² 2.5 mm	Silencio xf ² 3.8 mm	Veneto Acoustic Cork xf ² 4.0 mm	Veneto Acoustic Cork xf ² Veneto Acoustic Cork Essenza Style Emme Acoustic Cork xf ² 4.4 mm	Etrusco xf ² 2.5 mm	Linoleum Conductive xf ² 2.5 mm	Linoleum SD Static Dissipative xf ² 2.5 mm
Type of floorcovering	EN 686 EN 687	-	-	-	-	Linoleum on a foam backing	-	-	-	-	-
CE Certification	EN 14041	Yes	Yes	Yes	Yes	Yes	Yes	Yes	Yes	Yes	Yes
Classification	EN ISO 10874 Domestic Commercial Light Industrial	Classes: 23 32 41	Classes: 23 34 43	Classes: 23 34 43	Classes: 23 34 43	Classes: 23 33 41	Classes: 23 33 41	Classes: 23 34 42	Classes: 23 34 43	Classes: 23 34 43	Classes: 23 34 43
TECHNICAL CHARACTERISTICS	STANDARDS										
Surface Treatment		xf ²	xf ² (acrylic Essenza)	xf ²	xf ²	xf ²	xf ²	xf ² (acrylic Essenza)	xf ²	xf ²	xf ²
Total thickness	EN ISO 24346	2.0 mm	2.5 mm	3.2 mm	2.5 mm	3.8 mm	4.0 mm	4.4 mm	2.5 mm	2.5 mm	2.5 mm
Total weight	EN ISO 23997	ca. 2 400 g/m ²	ca. 3 000 g/m ²	ca. 3 900 g/m ²	ca. 3 000 g/m ²	ca. 3 450 g/m ²	ca. 4 100 g/m ²	ca. 4 600 g/m ²	ca. 3 000 g/m ²	ca. 3 000 g/m ²	ca. 3 000 g/m ²
Residual indentation	EN ISO 24343-1	ca. 0.07 mm	ca. 0.08 mm	ca. 0.10 mm	ca. 0.08 mm	≤ 0.20 mm	≤ 0.25 mm	≤ 0.25 mm	ca. 0.08 mm	ca. 0.08 mm	ca. 0.08 mm
Flexibility	EN ISO 24344 Method A	≤ 25 mm Ø	≤ 30 mm Ø	≤ 40 mm Ø	≤ 30 mm Ø	≤ 30 mm Ø	≤ 30 mm Ø	≤ 30 mm Ø	≤ 30 mm Ø	≤ 30 mm Ø	≤ 30 mm Ø
Form of delivery	EN ISO 24341	≤ 30 x 2 m	≤ 30 x 2 m	≤ 30 x 2 m	≤ 30 x 2 m	≤ 27 x 2 m or ≤ 27 x 1.95 m (subject to availability-please check up order)		≤ 30 x 2 m	≤ 30 x 2 m	≤ 30 x 2 m	≤ 30 x 2 m
TECHNICAL PERFORMANCES	STANDARDS										
Fire classification	EN 13501-1	Cr s1	Cr s1 (B ₂ s1 for Veneto xf ² B ₂)	Cr s1	Cr s1	Cr s1	Cr s1	Cr s1	Cr s1	Cr s1	Cr s1
Impact sound reduction	EN ISO 10140-3 EN ISO 717-2	5 dB	6 dB	8 dB	6 dB	18 dB	15 dB	15 dB	6 dB	6 dB	6 dB
Impact sound in the room	NF S31-074	Class C < 85 dB	Class C < 85 dB	Class B < 75 dB	Class C < 85 dB	Class A < 65 dB	Class B < 75 dB	Class B < 75 dB	Class C < 85 dB	Class C < 85 dB	Class C < 85 dB
Impact sound reduction with Elafono*	EN ISO 140-8 EN ISO 717-2	14 dB	14 dB	15 dB	14 dB	Not applicable	Not applicable	Not applicable	14 dB	Not applicable	Not applicable
Castor chair	EN ISO 4918	Suitable for office chairs with castors type W (Norm EN 12529)									
Static electrical propensity	EN 1815	< 2 kV	< 2 kV	< 2 kV	< 2 kV	< 2 kV	< 2 kV	< 2 kV	< 2 kV	< 2 kV	< 2 kV
Electrical resistance	EN 1081 ESD-approval SP method 2472 EN/IEC 61340-4-1	-	-	-	-	-	-	-	-	R ₁ ≤ 10 ⁹ Ω R ₂ ≤ 10 ⁸ Ω R ≤ 10 ⁶ Ω R ≤ 10 ⁶ Ω	R ₁ ≤ 10 ⁸ Ω R ₂ ≤ 10 ⁸ Ω 1x10 ⁴ < R < 1x10 ⁹ Ω R ≤ 10 ⁶ Ω
Slip resistance	EN 13893 DIN 51130	DS: ≥ 0.30 R9	DS: ≥ 0.30 R9	DS: ≥ 0.30 R9	DS: ≥ 0.30 R10	DS: ≥ 0.30 R9	DS: ≥ 0.30 R9	DS: ≥ 0.30 R9	DS: ≥ 0.30 R9	DS: ≥ 0.30 R9	DS: ≥ 0.30 R9
Chemical resistance	EN ISO 26987	Resistant to dilute acids, oils, fats, current solvents and alkalis									
Thermal resistance Underfloor heating	EN ISO 10456	0.012 m ² K/W Suitable	0.015 m ² K/W Suitable	0.019 m ² K/W Suitable	0.015 m ² K/W Suitable	0.040 m ² K/W Suitable	0.042 m ² K/W Suitable	0.045 m ² K/W Suitable	0.015 m ² K/W Suitable	0.015 m ² K/W Suitable	0.015 m ² K/W Suitable
Light fastness	EN ISO 105-B02 Method 3	≥ 6	≥ 6	≥ 6	≥ 6	≥ 6	≥ 6	≥ 6	≥ 6	≥ 6	≥ 6
Determination of antibacterial activity	EN ISO 22196	Naturally bactericidal									
Colours		20	72 (Veneto) - 10 (Veneto xf ² B ₂) 30 (Essenza) - 15 (Style Emme) 11 (Style Elle)	20	29	72 (Veneto) 15 (Style Emme) 11 (Style Elle) 14 (Etrusco)	20 on request	on request: 72 (Veneto) 30 (Essenza) 15 (Style Emme)	14	1	4

The above information is subject to modification for the benefit of further improvement. (11/15).

DISCLAIMER: Although the utmost care is taken, the data here given could differ and be subject to modifications from a technical point of view.

In its drive to improve its floor solutions, Tarkett reserves the right to modify its technical specifications, colours and materials at any moment and without prior notice. Please, check the effective availability of the products presented at the time of order. Due to the technical limits of reproduction and printing techniques used, the appearance (colour) of the product may vary from the samples, panels or other visual display materials exhibited to the customer. It is mandatory to have the products installed properly if they are to service correctly and safely. Refer to Tarkett technical installation and maintenance directions, available at www.tarkett.com or at your Tarkett dealer.

*Elafono: 2,0mm traditional, 100% natural corkment underlay to be installed in combination with any compact Tarkett linoleum to get additional sound reduction (up to 15dB, depending on the product). Available in rolls ≤30 x 2m.

CUSTOMS TARIFF: 48205000000F

GOLD	SILVER	BRONZE
Veneto Essenza 100% Linen	All our linoleum ranges (except Silencio 18dB acoustic range)	Silencio 18dB acoustic range
Acoustic	Compact	

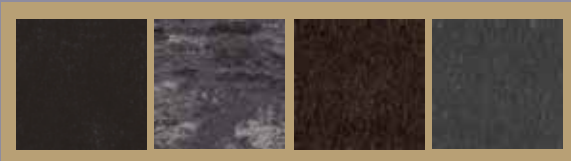
QUALITY SYSTEM	ENVIRONMENTAL MANAGEMENT SYSTEM	GREENHOUSE GASES - CARBON FOOTPRINT OF PRODUCTS	ENERGY MANAGEMENT SYSTEM	SOCIAL ACCOUNTABILITY

ULGA CERTIFIED BIOBASED PRODUCT	ENVIRONMENTAL PART	FLOOR SCORE	CERTIFIED	CERTIFIED	CERTIFIED	CERTIFIED

TECHNICAL SOLUTIONS

SD STATIC DISSIPATIVE xf^2

A safe, sustainable flooring designed for static control near computer, electronic and telecommunications equipment in medical, manufacturing, education and industry environments. Available in rolls and cuts for raised floors.



CONDUCTIVE xf^2 THE ONLY CONDUCTIVE LINOLEUM

A safe and sustainable flooring designed for a stable and reliable conductive control. The natural solution for education, healthcare and office environments, especially for areas like server and computer rooms, laboratory and electronic equipment in operating theatres. Available in rolls and cuts for raised floors.

VENETO SICURO xf^2 R10

R10 slip resistant rating: combines the need for a secure grip with the ease of cleaning of xf^2 . Ideal for building entrances. Available in rolls and cuts for raised floors.

VENETO B_{fl} xf^2

2.5mm Linoleum B_{fl} fire rating, without flame retardants. Bfl by its natural ingredients. Ideal for escaping areas. Available in rolls and cuts for raised floors.

VENETO ESSENZA

The traditional factory-applied non-permanent finish, PU free.

SILENCIO xf^2

2.5 mm linoleum with jute backing and recycled polyurethane foam underlayer, giving an excellent sound reduction of 18 dB.

Silencio is available on all colors and designs. Available in rolls and cuts for raised floors.

ACOUSTIC CORK xf^2 / ESSENZA

2 or 2.5 mm linoleum and natural Elafono (cork underlayer) giving an excellent sound reduction of 15 dB, the best in the market with similar products, as well as a high resistance to indentation.

Product on demand in the following options:

- Veneto xf^2 and Essenza: 2.5 mm linoleum with jute backing and Elafono cork underlayer
 - Veneto xf^2 : 2mm linoleum with jute backing and Elafono cork underlayer.
 - Style Emme xf^2 : 2.5 mm linoleum with jute backing and Elafono cork underlayer
- Available in rolls and cuts for raised floors.

ELAFONO

2.0 mm traditional, 100% natural, corkment underlay to be installed in combination with any compact Tarkett linoleum to get added sound reduction (up to -15 dB, depending on the product). Available in rolls.

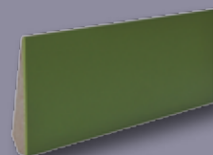
ACCESSORIES

LINOLEUM SET-ON SKIRTINGS (SOS)

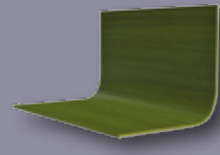
- available in: 6/8 cm high x 220 cm long

LINOLEUM SET-IN SKIRTINGS (SIS)

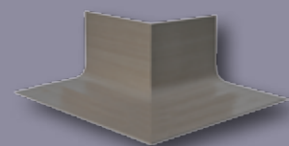
- available in: 6/8/10 cm high x 10 cm width x 240 cm long
- also possible with 20 cm width onto the floor
- SIS outer corner available in: 6/8/10 cm high x 10 cm width (size of the corner 13x13 cm)
- also possible with 20 cm width onto the floor



Lino SOS



Lino SIS



Lino SIS outer angle



Veneto 2.5 mm

Veldhoen Gilde
Venray, The Netherlands



Etrusco 2.5mm

Vasa Museum
Stockholm, Sweden



Veneto 2.5 mm

Bogazici University Hamlin Hall
Istanbul, Turkey



Etrusco 2.5 mm

Eckbolsheim Daycare
France



Veneto 2.5 mm

The Edge Library
Brisbane, Australia



Scan and join us to know more about Linoville!



■ **WESTERN EUROPE:** **Austria:** Tarkett Holding GmbH, Niederlassung Wien – Tel. +43 1 47 88 062 ■ **Belgium:** Tarkett France Belux – Tel. +32 16 35 98 80 ■ **Denmark:** Tarkett A/S – Tel. +45 43 90 60 11 ■ **Finland:** Tarkett Oy – Tel. +358 9 4257 9000 ■ **France:** Tarkett SAS – Tel. +33 1 41 20 42 49 ■ **Germany:** Tarkett Holding GmbH, Bereich Objekt – Tel. +49 62 33 810 ■ **Greece:** Tarkett Monoprosopi Ltd – Tel. +30 210 6745 340 ■ **Italy:** Tarkett S.p.A. – Tel. +39 0744 7551 ■ **Luxembourg:** Tarkett GDL SA – Tel. +352 949 211 8804 ■ **Netherlands:** Tarkett Holding GmbH, Vestiging Nederland – Tel. +31 416 685 491 ■ **Norway:** Tarkett AS – Tel. +47 32 20 92 00 ■ **Portugal:** Tarkett SA – Tel. +351 21 427 64 20 ■ **Spain:** Tarkett Floors S.L – Tel. +34 91 358 00 35 ■ **Sweden:** Tarkett Sverige AB – Tel. +46 771 25 19 00 ■ **Switzerland:** Tarkett Holding GmbH, Bereich Objekt Schweiz – Tel. +41 043 233 79 24 ■ **Turkey:** Tarkett Aspen – Tel. +90 212 213 65 80 ■ **United Kingdom:** Tarkett Ltd – Tel. +44 (0) 1622 854 040 ■ **EASTERN EUROPE:** **Baltic Countries:** Tarkett Baltics: Tel. +370 37 262 220 ■ **Czech Republic:** Tarkett France SAS, org. slozka – Tel. +420-271 001 602 ■ **Hungary:** Tarkett France SAS – Tel. +36 1 437 8150 ■ **Poland:** Tarkett Polska Sp. z o. o. – Tel. +48 22 16 09 231 ■ **Russian Federation:** ZAO Tarkett RUS – Tel. +7 495 775 3737 ■ **Slovakia:** Tarkett France SAS, org.zlozka – Tel. +421 248 291 317 ■ **South East Europe:** Tarkett Trade d.o.o. – Tel. +381 21 7557 649 (44) 569 12 21 ■ **Ukraine:** Tarkett UA – Tel. +38 (0) 44 569 12 21 ■ **ASIA AND OCEANIA:** **Australia:** Tarkett Australia Pty Ltd – Tel. +61 2 88 53 12 00 ■ **China:** Tarkett Floor Covering (Shanghai) Co. Ltd. – Tel. +86 (21) 60 95 68 38 ext 841 ■ **North East Asia:** Tarkett Hong Kong Limited – Tel. +852 2511 8716 ■ **India:** Tarkett France (India Branch) – Tel. +91 11 4352 4073 ■ **South East Asia:** Tarkett Flooring Singapore Pte. Ltd. – Tel. +65 6346 1585 ■ **AFRICA:** **Tarkett International:** Tel. +33 1 41 20 41 01 ■ **MIDDLE EAST:** **Tarkett Middle East:** Tel. +961 1 51 3363/4 ■ **Israël:** Tarkett International: Tel. +33 1 41 20 41 01 ■ **NORTH AMERICA:** **USA:** Tarkett Inc. – Tel. +1 713 869 5811 / Johnsonite – Tel. +1 440 543 8916 ■ **Canada:** Tarkett Inc. – Tel. +1 450 293 173 ■ **LATIN AMERICA:** **Brazil:** Tarkett – Tel. 55 12 3954 7108 ■ **Argentina - Chile - Uruguay:** Tarkett Latam Mercosur – Tel. +54 11 47 08 07 72 / +54 9 11 44 46 88 82 ■ **Bolivia - Colombia - Ecuador - Panama - Paraguay - Peru - Trinidad and Tobago - Venezuela:** Tarkett – Tel. +55 11 9 8410 9310 / +55 11 95494 0069 ■ **Mexico /Central America:** Tarkett Latam Mexico – Tel. +55 11 98410 9310



Tarkett

professionals.tarkett.com